

RECEIVED: 27/08/2025

Illaunbaun Wind Farm - Environmental Impact Assessment Report

Appendix A13-03: Measured background noise levels for each noise monitoring location



Clare Planning Authority - Inspection Purposes Only!

LIST OF FIGURES

Figure 1-1: NML2 – Comparison of Background Noise Levels and Wind Speed Over the Measurement Period	3
Figure 1-2: NML2 – Quiet Daytime Background Noise Level V Wind Speed	4
Figure 1-3: NML2 –Night-time Background Noise Level V Wind Speed	4
Figure 1-4: NML3 – Comparison of Background Noise Levels and Wind Speed Over the Measurement Period	5
Figure 1-5: NML3 – Quiet Daytime Background Noise Level V Wind Speed	5
Figure 1-6: NML3 –Night-time Background Noise Level V Wind Speed	6
Figure 1-7: NML4 – Comparison of Background Noise Levels and Wind Speed Over the Measurement Period	7
Figure 1-8: NML4 – Quiet Daytime Background Noise Level V Wind Speed	7
Figure 1-9: NML4 –Night-time Background Noise Level V Wind Speed	8

1 APPENDIX A13-03: MEASURED BACKGROUND NOISE LEVELS FOR EACH NOISE MONITORING LOCATION

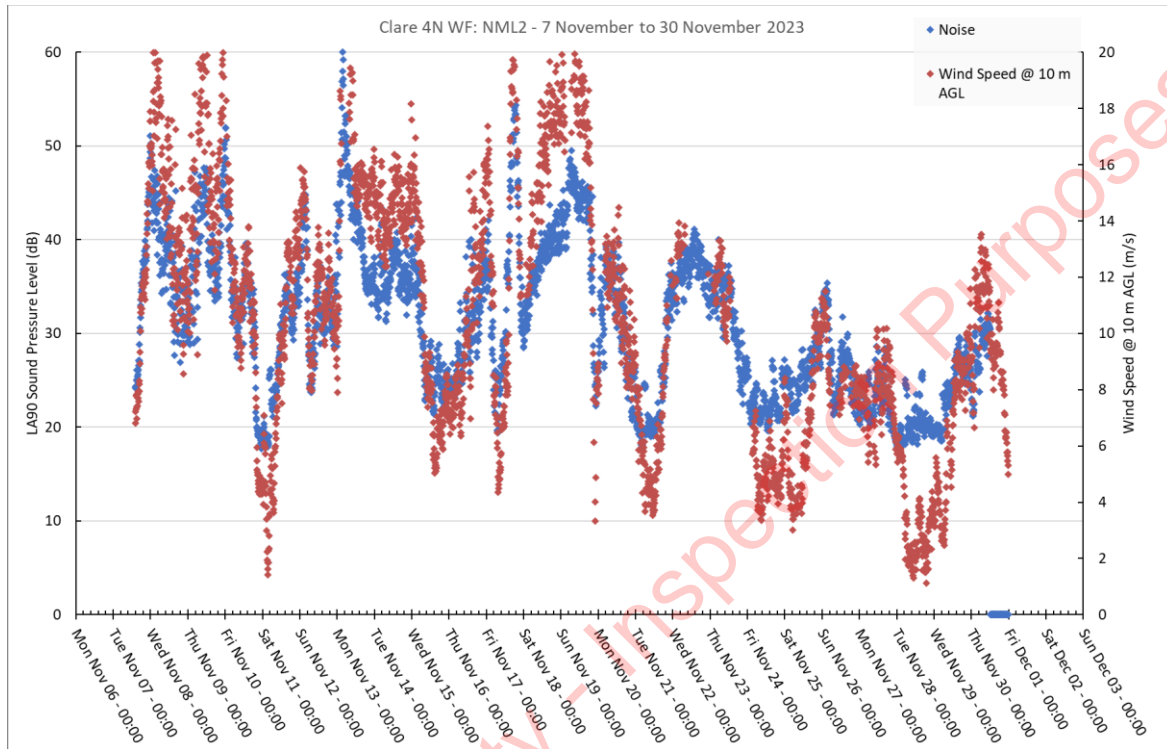


Figure 1-1: NML2 – Comparison of Background Noise Levels and Wind Speed Over the Measurement Period

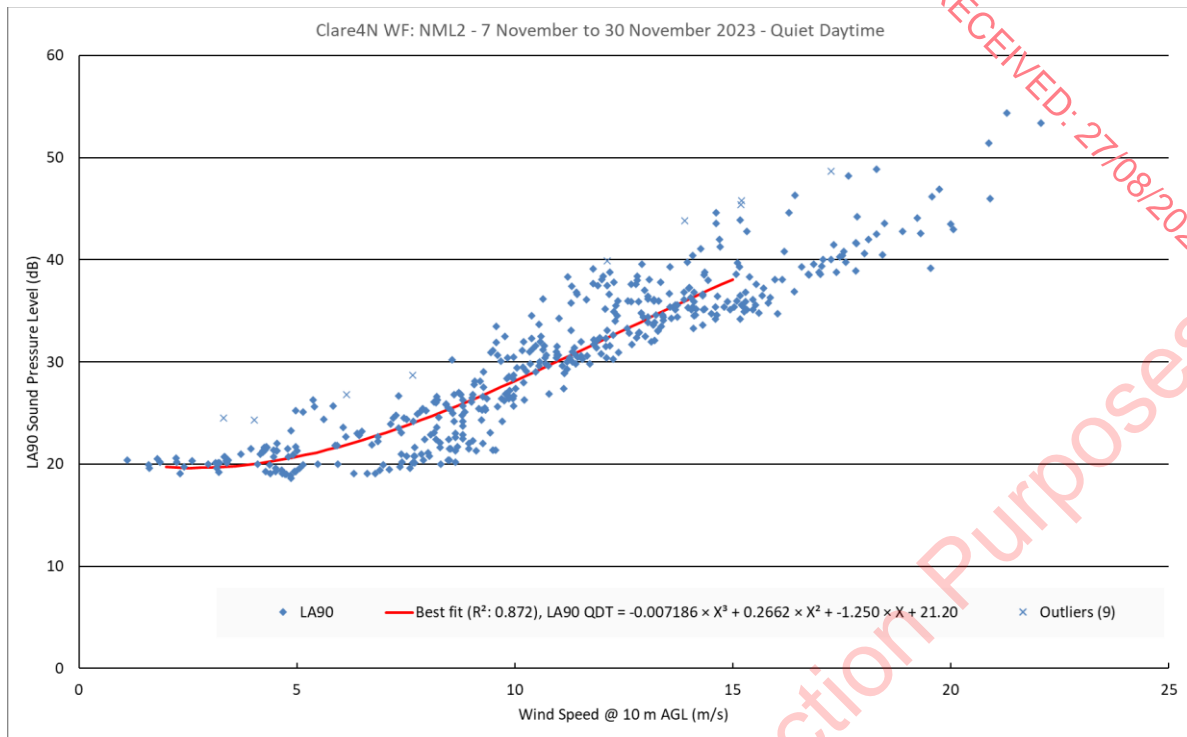


Figure 1-2: NML2 – Quiet Daytime Background Noise Level V Wind Speed

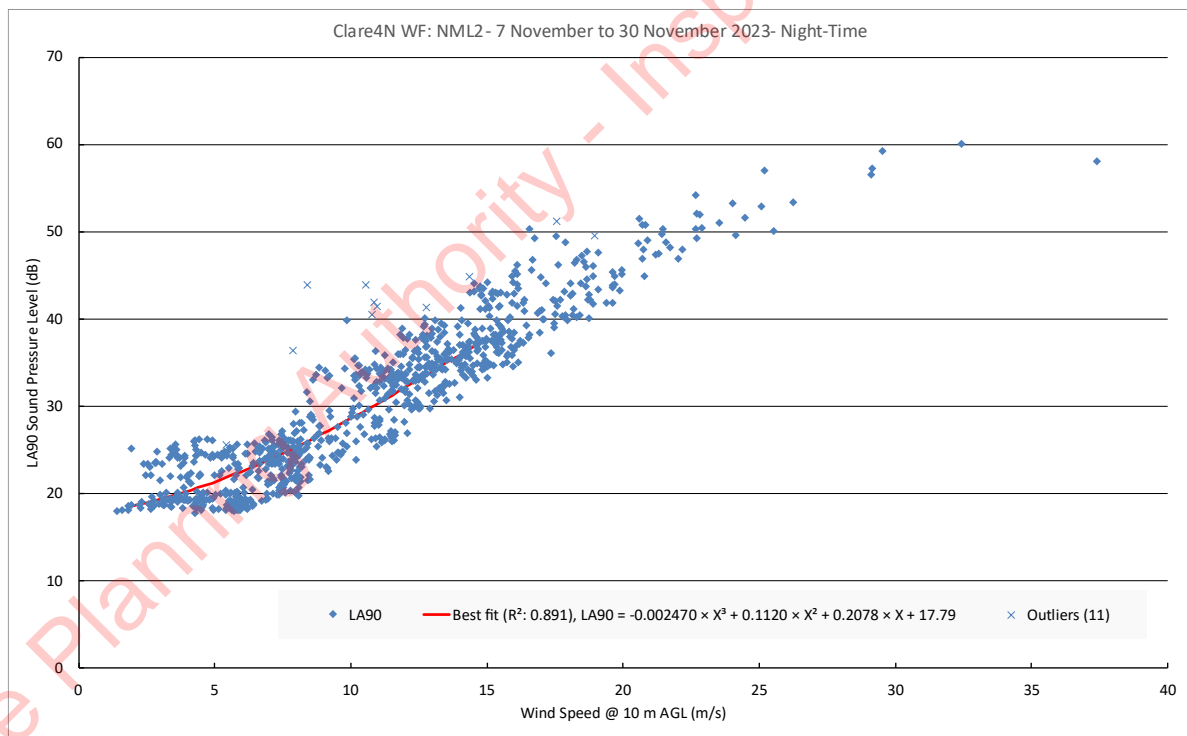


Figure 1-3: NML2 –Night-time Background Noise Level V Wind Speed

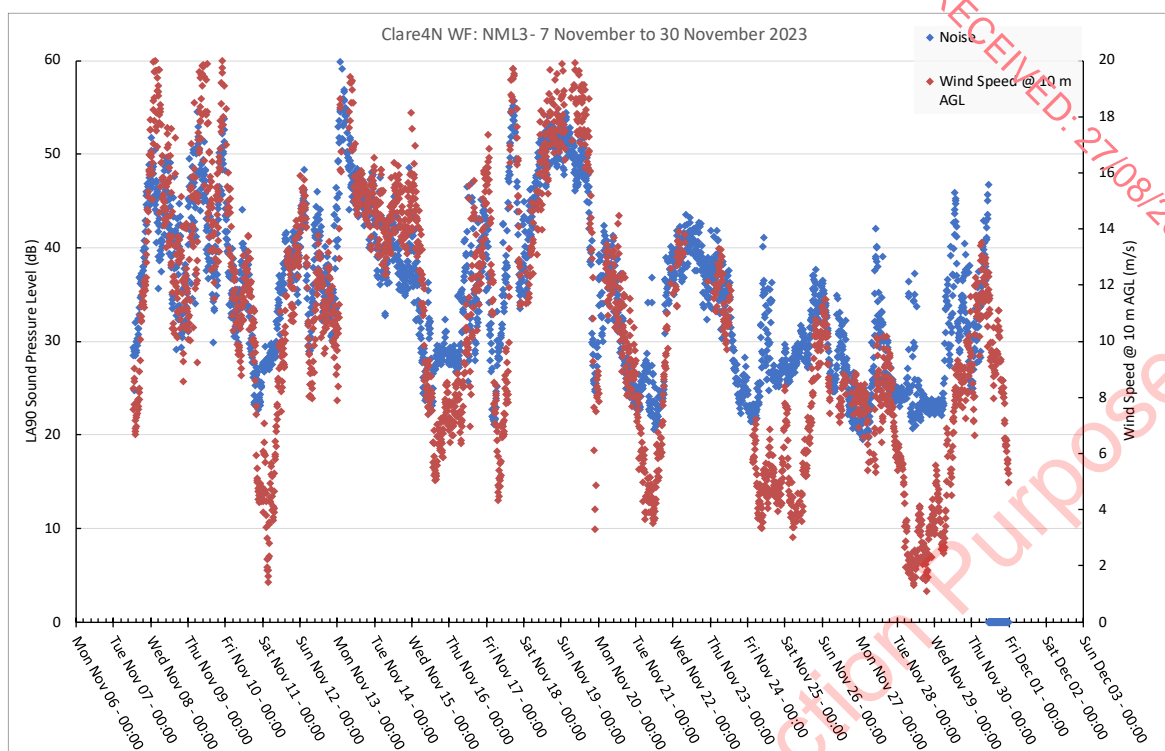


Figure 1-4: NML3 – Comparison of Background Noise Levels and Wind Speed Over the Measurement Period

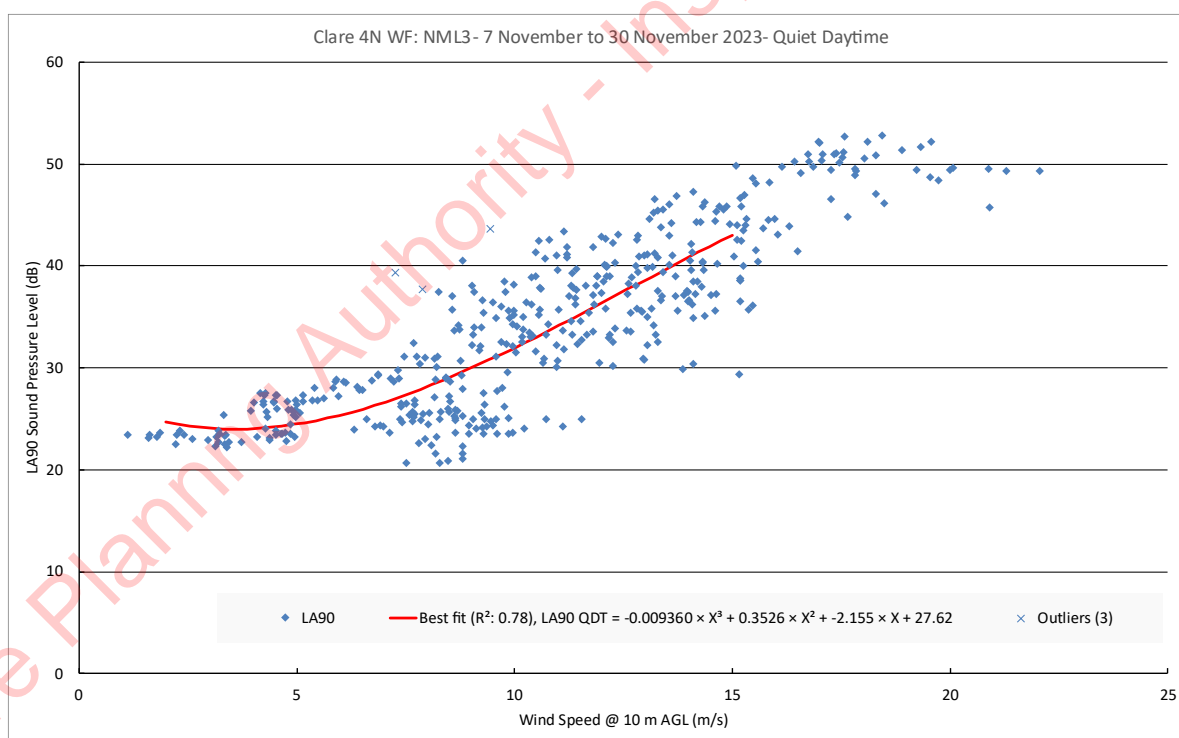


Figure 1-5: NML3 – Quiet Daytime Background Noise Level V Wind Speed

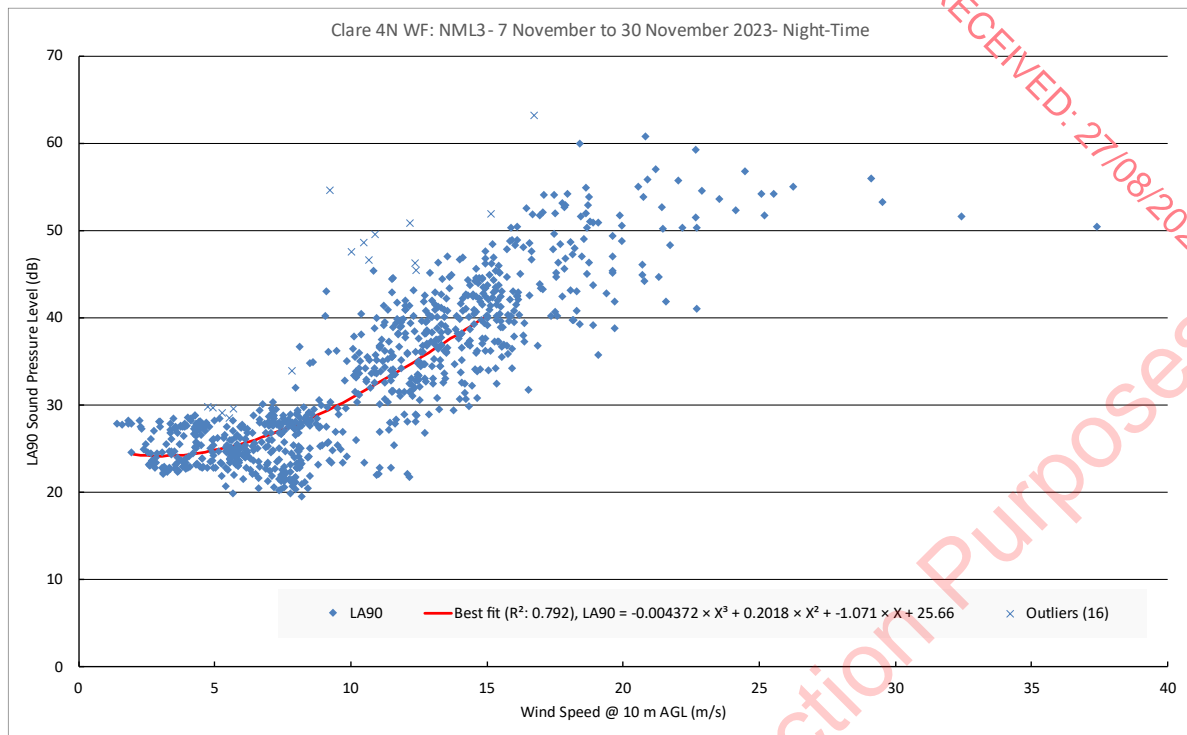


Figure 1-6: NML3 –Night-time Background Noise Level V Wind Speed

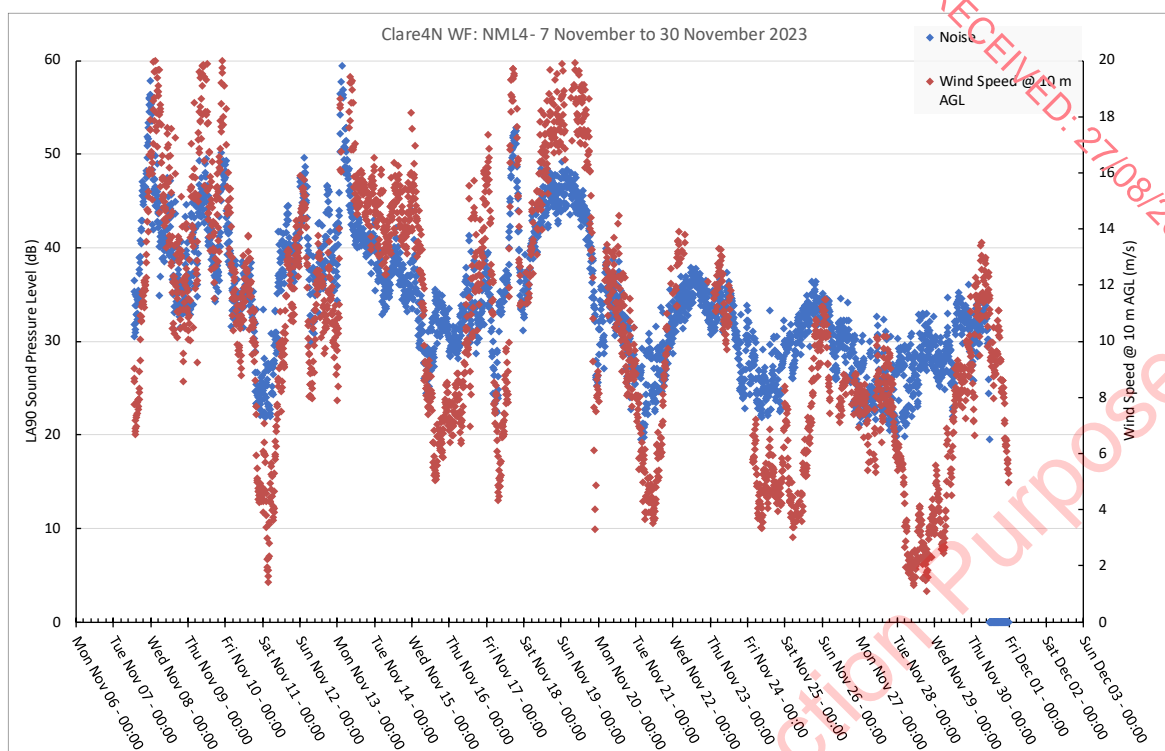


Figure 1-7: NML4 – Comparison of Background Noise Levels and Wind Speed Over the Measurement Period

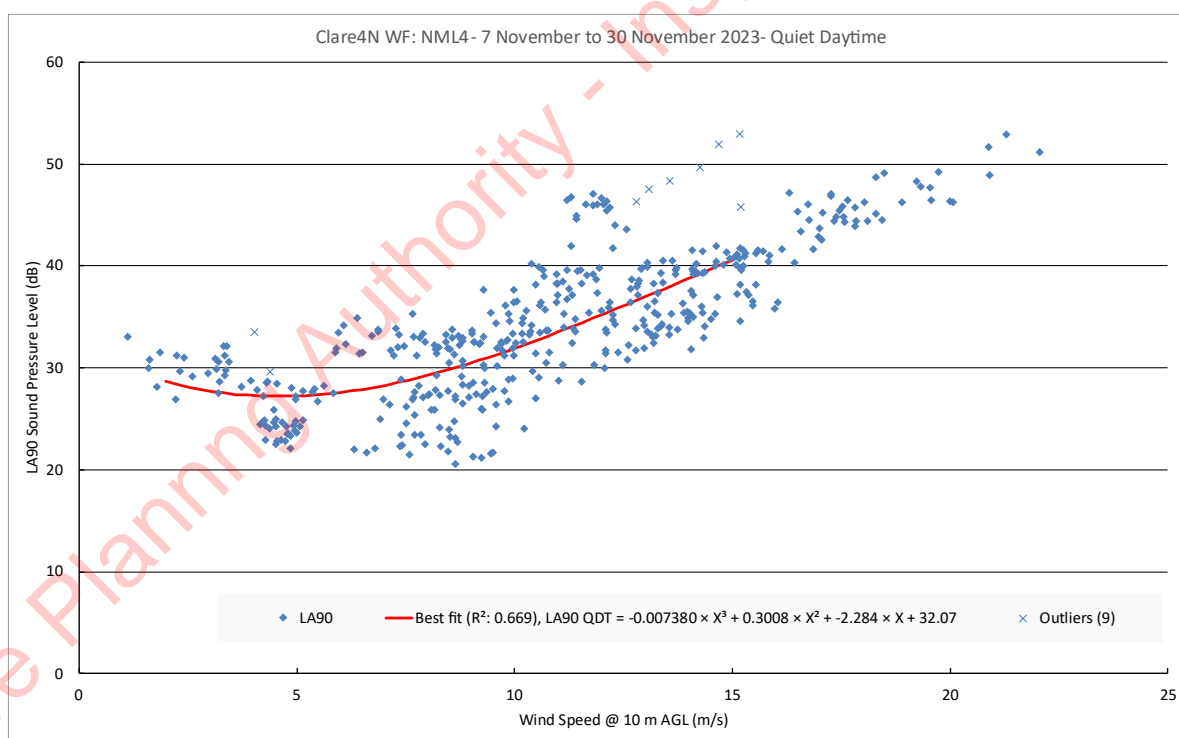


Figure 1-8: NML4 – Quiet Daytime Background Noise Level V Wind Speed

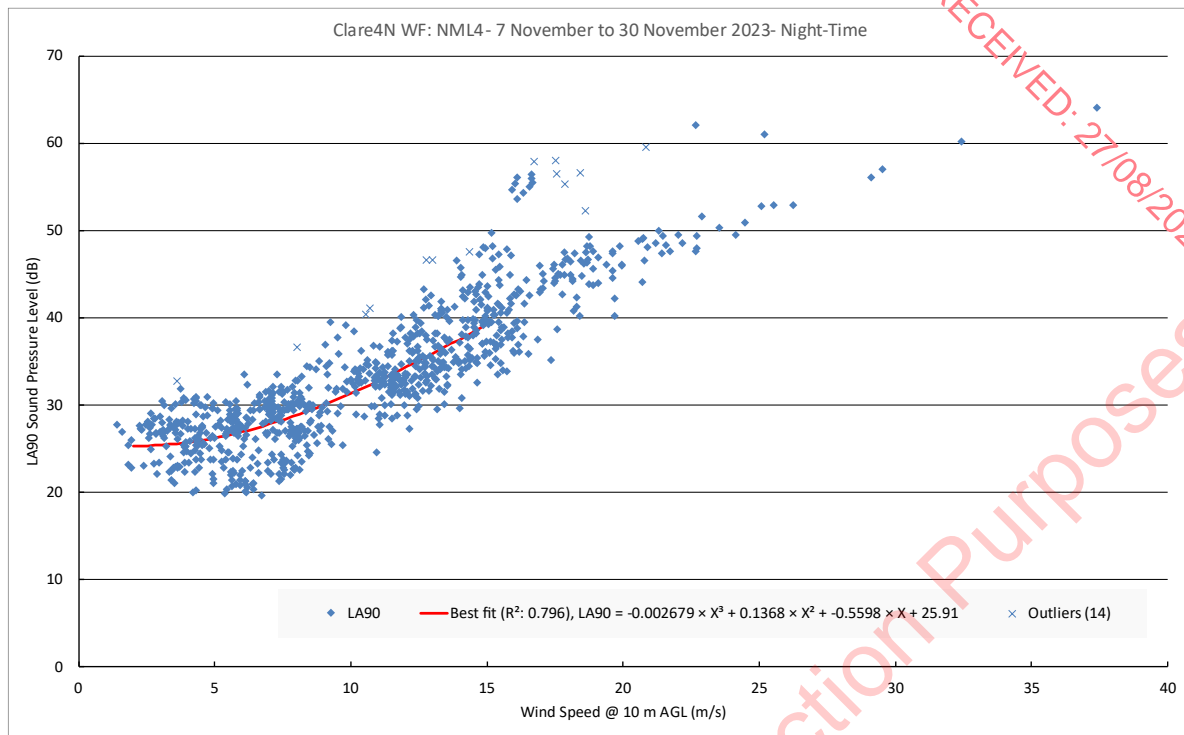
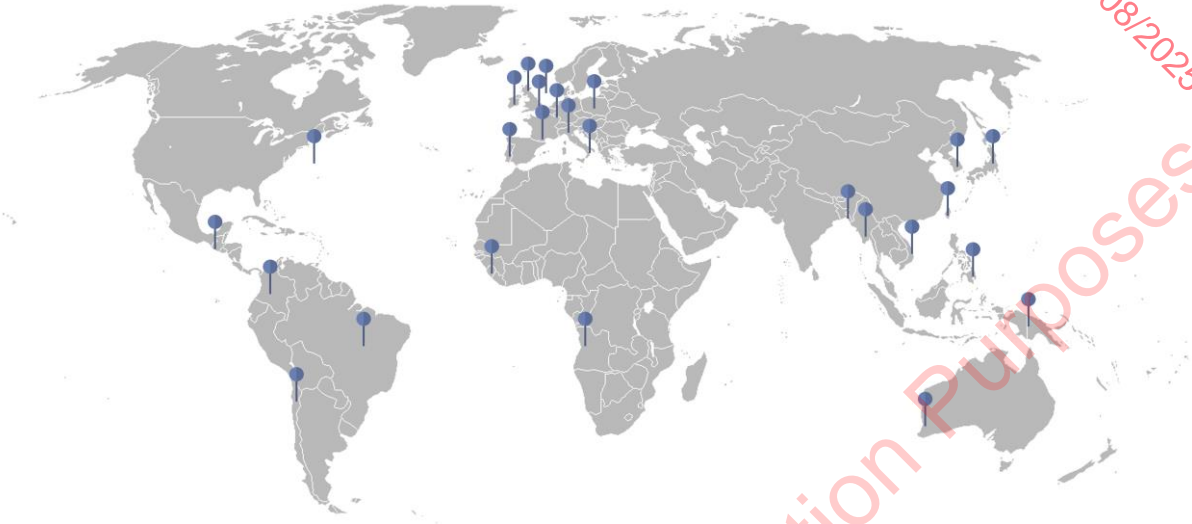


Figure 1-9: NML4 –Night-time Background Noise Level V Wind Speed

GLOBAL PROJECT REACH



Offices

Dublin (Head Office)

Gavin & Doherty Geosolutions
Unit A2, Nutgrove Office Park
Rathfarnham
Dublin 14, D14 X627
Phone: +353 1 207 1000

Cork

Gavin & Doherty Geosolutions
First Floor, 12 South Mall
Cork
T12 RD43

London

Gavin & Doherty Geosolutions (UK) Limited
85 Great Portland Street, First Floor
London
W1W 7LT

Utrecht

Gavin & Doherty Geosolutions
WTC Utrecht, Stadsplateau 7
3521 AZ Utrecht
The Netherlands

Belfast

Gavin & Doherty Geosolutions (UK) Limited
Scottish Provident Building
7 Donegall Square West
Belfast
BT1 6JH

Edinburgh

Gavin & Doherty Geosolutions (UK) Limited
22 Northumberland Street SW Lane
Edinburgh
EH3 6JD

Rhode Island

Gavin & Doherty Geosolutions Inc.
225 Dyer St, 2nd Floor
Providence, RI 02903
USA

GDG
GAVIN & DOHERTY
GEOSOLUTIONS

Website: www.gdgeo.com

Email: info@gdgeo.com



A Venterra Group Plc
Member Company